



ALOHA!

# ***First Grade!***

**BTSN 9/8/2025**

# ***Tonight's agenda***

- **Team introduction**
- **HCPSS information**
- **Testing in Elementary grades**
- **Our schedule**
- **Curricular areas**
- **Grading and Report Cards**
- **Supporting your child at home**
- **PBIS and Mental Health Supports**
- **Code of Conduct**
- **Trips and events**
- **Communication**
- **Q and A**



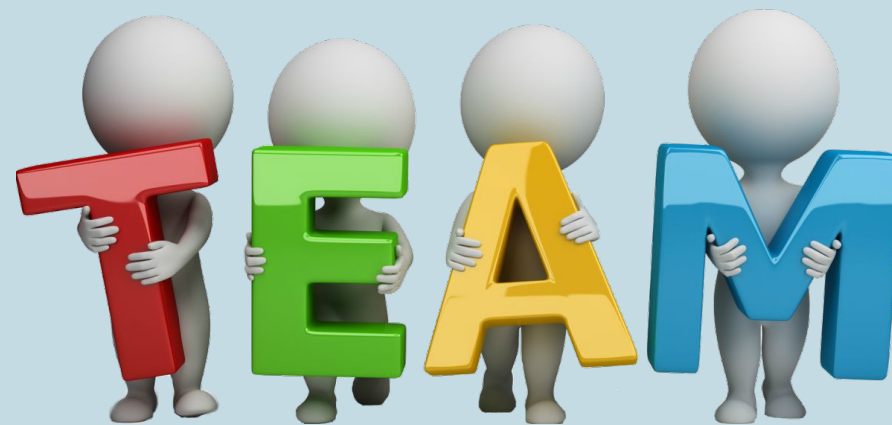
# ***First Grade Team***

- **Meghan Kasten, Team Leader**
- **Alicia Bloom**
- **Rosie Gindes**
- **Eileen Nelson**
- **Vicki Leaf, Paraeducator**



# HCPSS Student Code of Conduct

We view the student code of conduct as a team effort. There are responsibilities for staff, students, families and our community. Let's all do our part to make this year safe and successful for all!



# Receiving Emails and Texts



Utilizing contact information submitted through the Family File, parents and guardians automatically receive emails from HCPSS and our school.

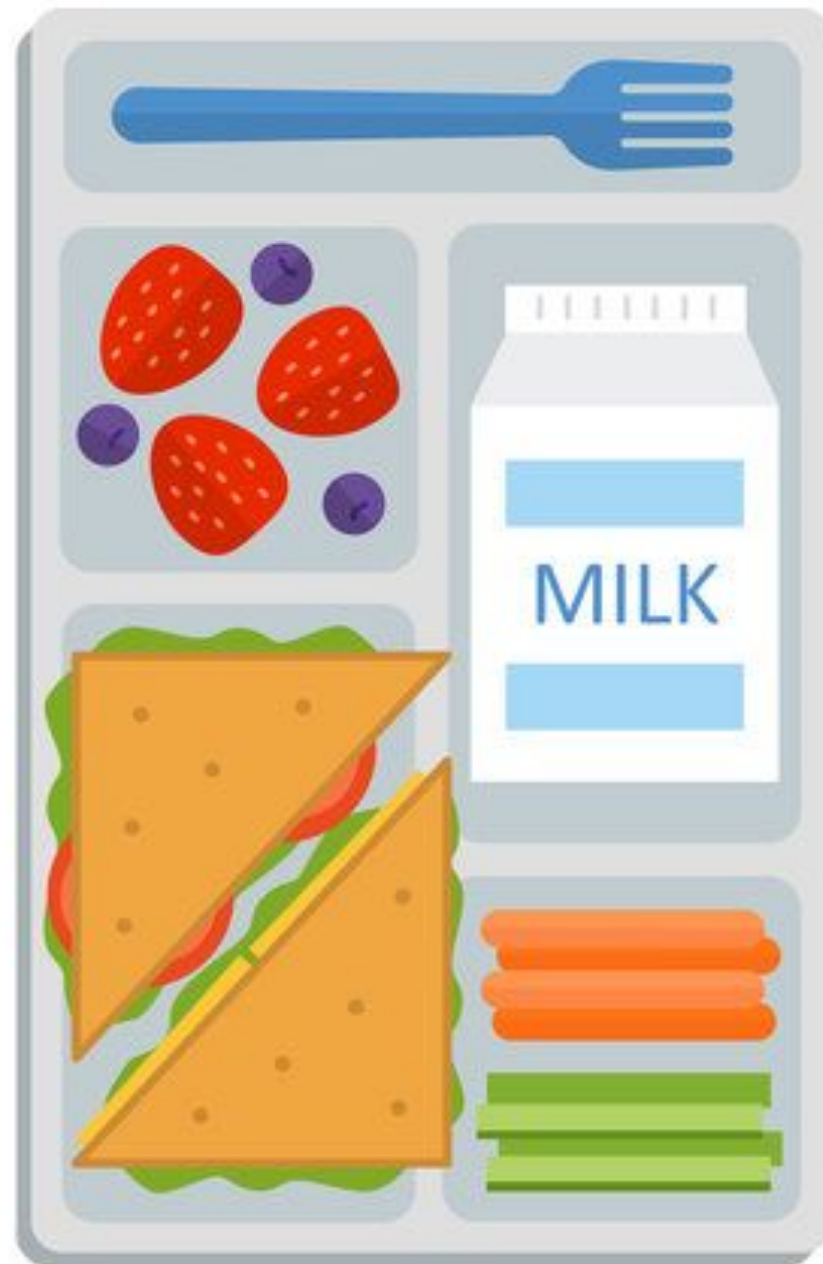
To comply with FCC & wireless carrier requirements, parents/guardians must opt in one time to receiving text message alerts. To opt in or confirm sign up, text the word “YES” to 67587 from the mobile number on file in HCPSS Connect Family File.

**Unsubscribing to either an HCPSS or school email, will remove you from receiving all email messaging—including emergency notifications!**

Please call the front office if you believe you are not receiving emails and/or text messages.

# 2025-2026 Student Meals

**Students whose families do not qualify for free or reduced priced lunch will be required to pay full price.**



## DAILY MEAL PRICES

### Student Breakfast

Breakfast – \$2.00

Reduced Price Breakfast – \$0.00

Free Breakfast – \$0.00

### Student Lunch

Elementary School Lunch – \$2.80

Middle/High School Lunch – \$3.30

Reduced Price Lunch – \$0.00

Free Lunch – \$0.00

Milk (1/2 pint) – \$0.50



# Free and Reduced-Price Meals (FARMs)

**Step 1:** Visit [www.hcpss.org/farms/](http://www.hcpss.org/farms/)

**Step 2:** Click “Apply Online” to begin the online application process

## HCPSS WEBSITE

### How to Apply

Please submit only one application per household. Families that need computer or language assistance to apply online, please contact your child’s school.

View the [federal income eligibility guidelines](#).

### Online

**APPLY ONLINE**

(ADDITIONAL LANGUAGES AVAILABLE)

- After the online application has been submitted and reviewed, eligibility notifications will be sent via email/mail.

## APPLICATION

**MY SCHOOL Apps**

Howard County Public School System

**Getting Started** | Household Information | Students | Children (Non-Student) | Signer's Information

### Getting Started

**What you will need to provide during the application process:**

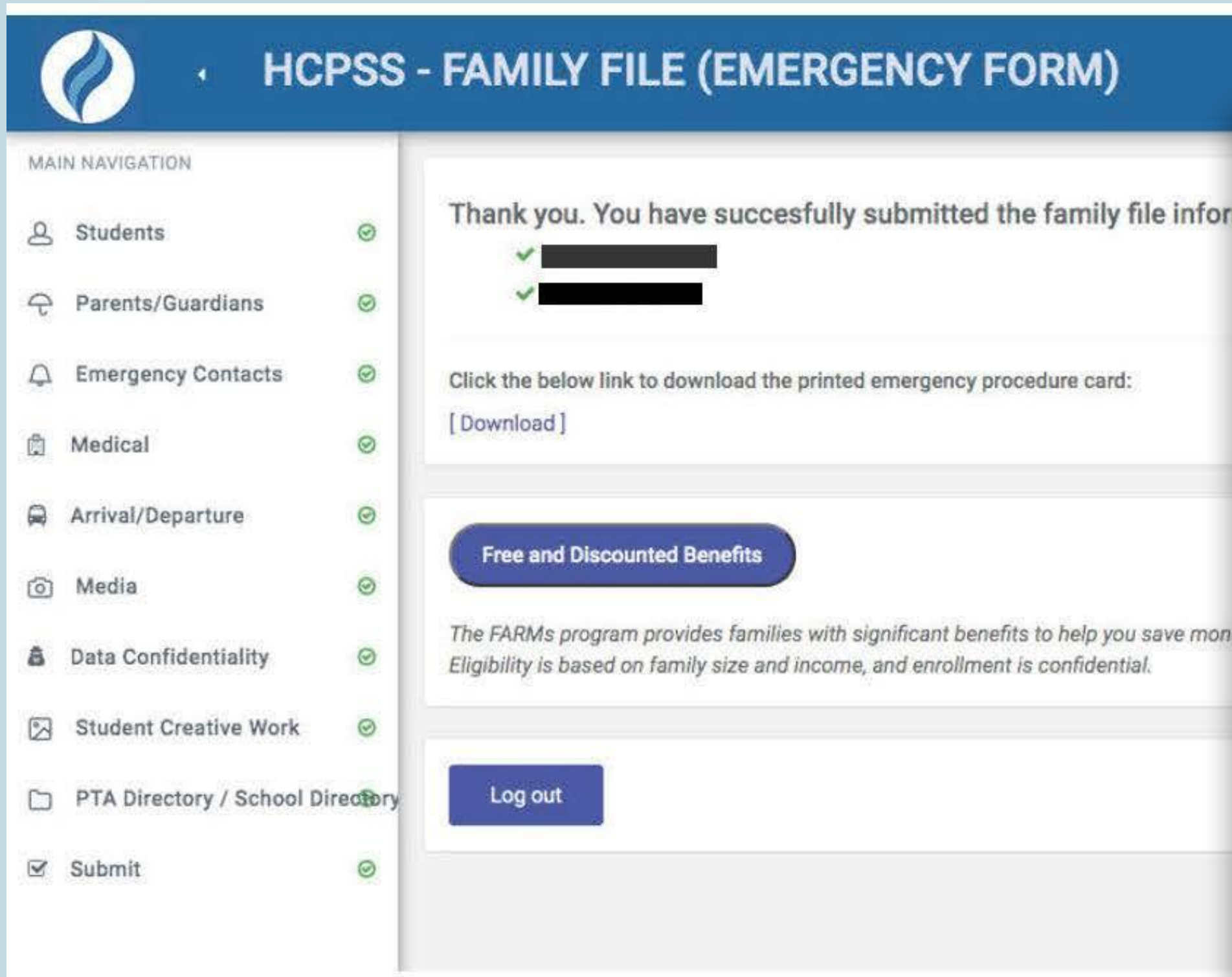
- The name and **current** income of every member of your household
- The school and grade of every student in your household
- Your electronic signature
- (Optional) A valid email address or phone number for district communication about the status of the application.

If you are ready to get started, click the button below to begin the online application process.

**BEGIN ONLINE APPLICATION PROCESS**

# Free and Reduced-Price Meals (FARMs)

Qualifying families can receive free or reduced-cost:



The screenshot shows a web interface for HCPSS. The header is blue with a logo on the left and navigation icons on the right. The main content area has a white background. On the left, there is a 'MAIN NAVIGATION' sidebar with a list of items: Students, Parents/Guardians, Emergency Contacts, Medical, Arrival/Departure, Media, Data Confidentiality, Student Creative Work, PTA Directory / School Directory, and Submit. Each item has a green checkmark next to it. The main content area displays a confirmation message: 'Thank you. You have successfully submitted the family file information.' Below this, there are two redacted lines of text. A link to download a printed emergency procedure card is provided. A blue button labeled 'Free and Discounted Benefits' is visible. Below the button, there is a paragraph of text explaining the FARMs program. At the bottom, there is a blue 'Log out' button.

HCPSS - FAMILY FILE (EMERGENCY FORM)

MAIN NAVIGATION

- Students
- Parents/Guardians
- Emergency Contacts
- Medical
- Arrival/Departure
- Media
- Data Confidentiality
- Student Creative Work
- PTA Directory / School Directory
- Submit

Thank you. You have successfully submitted the family file information.

Click the below link to download the printed emergency procedure card:  
[ Download ]

**Free and Discounted Benefits**

The FARMs program provides families with significant benefits to help you save money. Eligibility is based on family size and income, and enrollment is confidential.

Log out

- School meals
- Health insurance
- Howard Community College tuition
- SAT, ACT and AP exam fees
- Camps, sports, child care
- Many other benefits



# Student Personal Device Use

- Personal devices may not be seen, heard, or be a distraction.
  - Smart watches may be worn during the student day.
  - Staff discretion is used on field trips.
  - School administrators may authorize use of a personal device in rare instances (mainly emergencies).
  - Personal laptops may be used for instructional activities in high school with teacher permission.
- 
- **1<sup>st</sup> violation:** Device is confiscated. Student picks up at end of the day.
  - **All other violations:** Device is confiscated. Parent/guardian must pick up.
  - Personal devices for assistive technology may be used as defined in an **IEP/504/Health Plan.**



***You've got this!***  
**Thank you for  
silencing and putting  
away your phone.**

Student personal devices must be away and silenced  
at all times during the student day.

# Be Involved

## Community Advisory Council



## Special Education Citizens Advisory Committee





# ***MAP:*** ***Measures of Academic Progress***

**We are using the MAP Assessments in Reading and Mathematics.**

**MAP is:**

**Computer-adaptive**

**Administered in Fall, Winter, and Spring**

**Created by Northwest Evaluation Association (NWEA)**





# Purpose of MAP Assessments

**Measures student growth, both during the school year and across multiple school years.**

**Determines instructional strengths and needs, in conjunction with other measures.**

**Supports differentiated, Common Core- aligned instruction, in conjunction with other measures.**

**Provides academic performance information for parents.**

# ***Fall MAP testing dates***

**Monday 9/15 at 9:00am**

**Tuesday 9/16 at 9:00am**

**\*\*\*Your child will need wired  
headphones (no bluetooth)\*\*\***

# ***Our Day***

- **8:30AM: Arrival/Balanced Beginnings**
- **8:45AM: Social Emotional Learning**
- **9-11AM : English Language Arts – Heggerty, Writing, Whole and small group reading**
- **11-11:50AM: Snack and Content**
- **11:50-12:50PM: Recess and lunch**
- **12:50-2:05PM Math**
- **2:05-3:05PM: Related Arts**



# ***Team Time (SEL)***

- **A classroom is a community of individuals. Each and every individual brings a unique culture to the classroom which strengthens the community.**
- **Each and every individual contributes valuable ideas and perspectives to the classroom.**
- **During this time we work on various social emotional skills as well as make connections as a class**

# ***Heggerty***

**Phonemic awareness is the missing piece for so many readers.**

**This explicit instruction provides a foundation for students to anchor their reading and writing skills during phonics instruction.**

**Heggerty provides all students with the necessary foundation in phonological and phonemic awareness.**

# ***Language Arts – Writing***

- **Writing**

- **Be a Writer** – provides explicit instruction in the writing process and genre that is grounded in decades of both research and practice

## **Writing Instruction**

- **Process**
- **Genre**

## **Student Talk**

- **Partners**
- **Groups**
- **Whole Class**

## **Daily Independent Writing**

## **Skills, Conventions, and Standards**



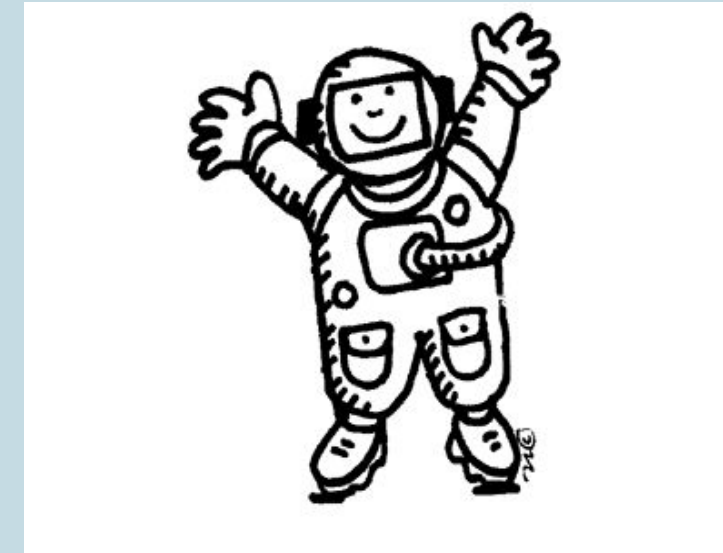
# ***Language Arts – Reading***

- **Whole group instruction, small instruction, independent work**  
**Being a Reader – research based early reading curriculum designed to teach both foundational skills as well as early reading competencies and comprehension.**
- **Consists of:**
  - **Whole group instruction – shared reading, handwriting, and word study**
  - **Differentiated small groups**
  - **Independent work rotations provide choice and foster self-efficacy**

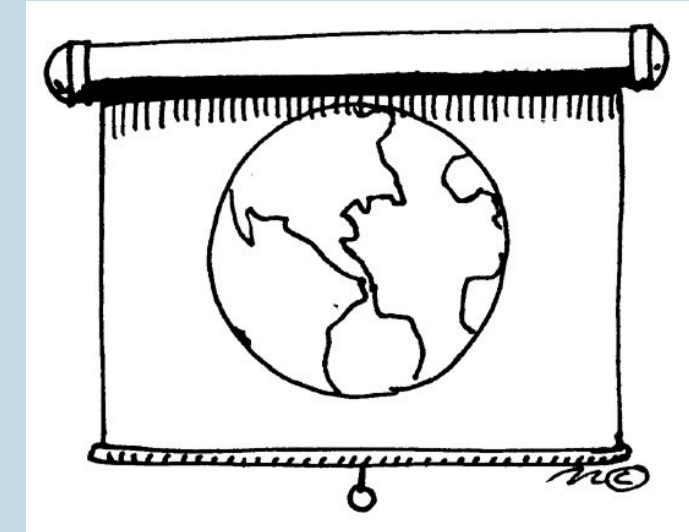
**Small group instruction will begin mid-October!**

# ***Science***

- **Plant and Animal Structure and Function**
- **Patterns in Space Systems**
- **Light**
- **Sound**



# ***Social Studies***



- **Civics**
  - How can I be a responsible citizen?
- **Geography**
  - How can we learn about the location in which we live?
- **Economics**
  - How does the economy impact you and the community?
- **History**
  - How does understanding the past help us?



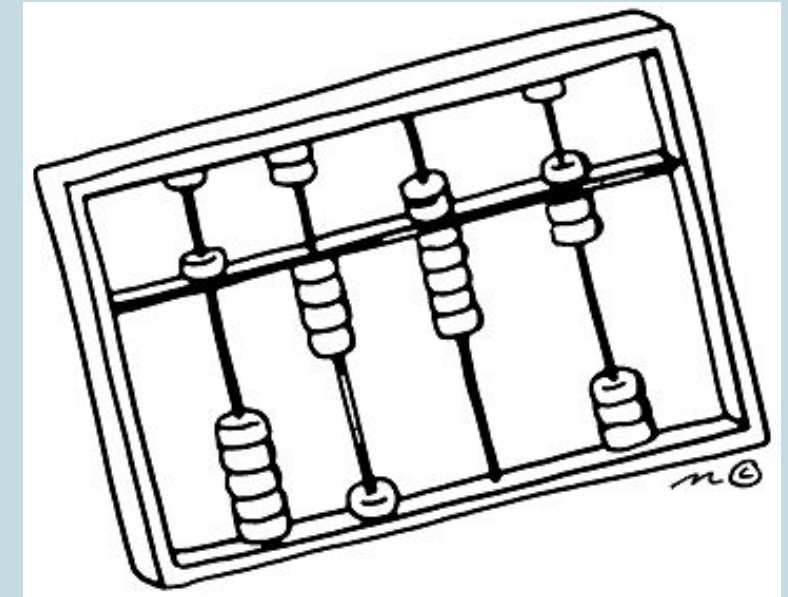
# ***Health***



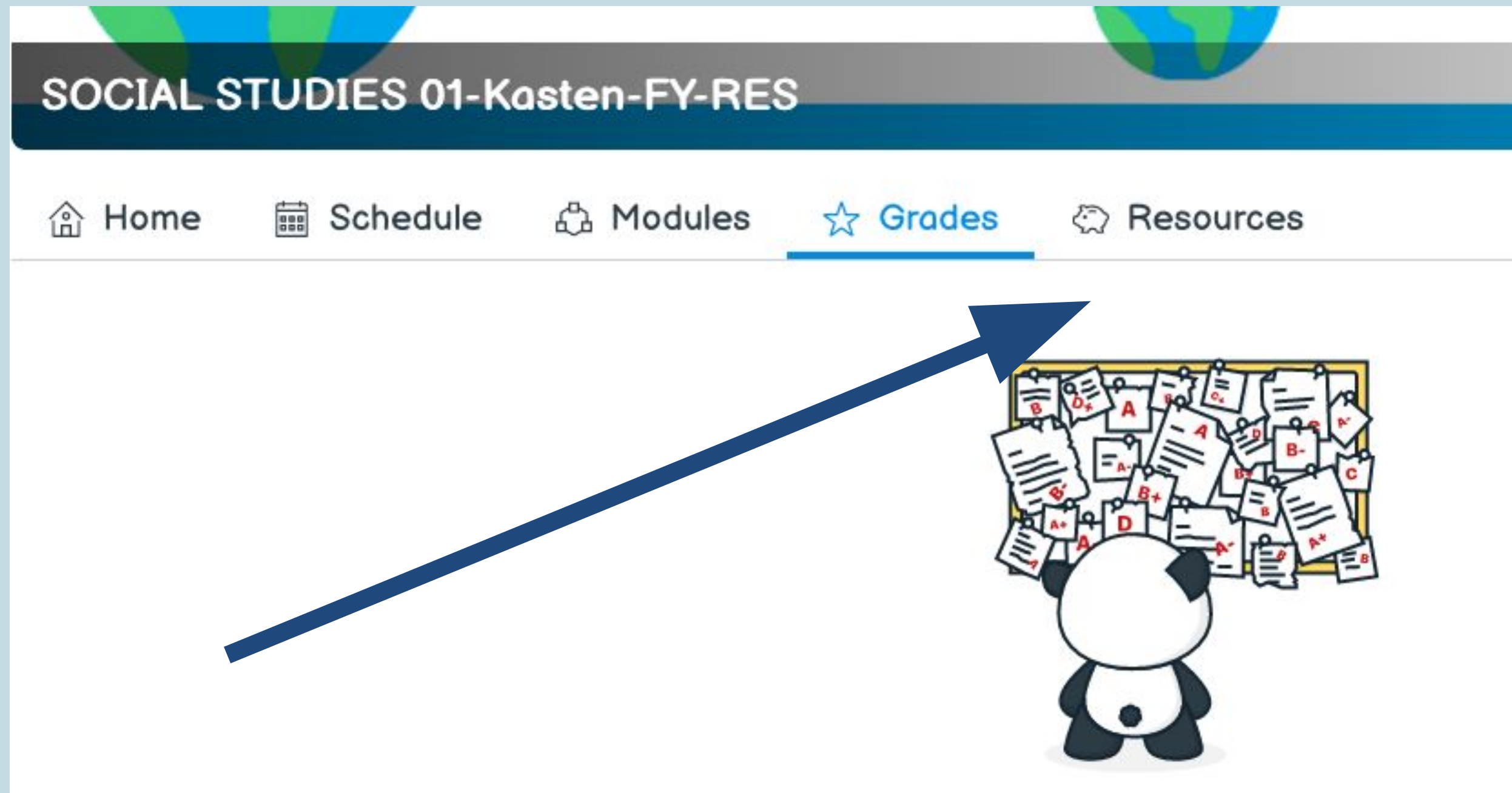
- **Social and Emotional Health**
  - **Feelings, Belonging, Family and friends, Teasing and bullying**
- **Safety and Injury Prevention**
  - **Being safe, getting, help, personal body safety**
- **Disease Prevention and Control**
  - **Safety rules: on wheels, in water, with medicine, fire safety and emergencies**
- **Nutrition and Fitness**
  - **Healthy habits, food groups, preventing illness**

# ***Mathematics***

- **Problem Solving**
- **Place Value and Number Relationships**
- **Addition/Subtraction**
- **Computational fluency (basic facts)**
- **Measurement**
- **Time**
- **Shapes and Attributes**



# Canvas Gradebooks



# ***PreK-2 Standards-Based***

## ***Instruction and Reporting***

**Starting this school year HCPSS will report student academic progress in grades PreK to 2 using standards-based reporting.**

**There are no changes to grade Grades 3-5 report cards. Intermediate grades will transition to standards based reporting in 2024-2025.**

**Standards-based reporting for PreK-2 will include:**

- **grading codes (M, P, L)**
- **Revised report cards**
- **Clearer alignment to standards**
- **Updated Canvas gradebook information**
- **Rubric-based grading**
- **Parent support resources**

# ***PreK-2 Standards-Based Instruction and Reporting*** **For More Information...**

---

Use the QR code to view  
standards-based instruction and  
reporting parent resources:





# ***Report Cards***

- **Sent home 4x per year**
- **Students will not be marked O/A/B**
- **Conferences will be held in November (ELA) and February (math)**

# ***At home support***

- **Homework Calendar: Begins in October**
  - **Math facts practice**
  - **Math concepts and skill practice**
  - **Reading: small group text and high-frequency words**

**In addition, we will from time to time:**

- **Send home unfinished classwork**
- **Send at home work/activities to reinforce key concepts**
- **Link optional county-created math practice pages in Canvas**

# What Your Child Will Learn Guides



On Canvas via  
HCPSS Connect

[www.hcpss.org/connect](http://www.hcpss.org/connect)

Curriculum content  
overview for each

- Grade (PreK – 5)
- Subject area

# ***PBIS (Positive Behavioral Interventions and Supports)***

**This year our PBIS theme is “Aloha”**

**As we aim to live “Aloha” we:**

**Ask**

**Listen**

**Observe**

**Make decisions with Heart**

**Adapt**



# *Meet the School Counselors*

---



Mrs. Tamara  
Braxton-Cheek

RES: Monday  
(every other),  
Wednesday and  
Friday

Grades: 2, 4

[tamara\\_braxton-cheek@hcpss.org](mailto:tamara_braxton-cheek@hcpss.org)



Mrs. Kelly Clark

RES: Each day

Grades: K, 1, 3, 5

[kelly\\_h\\_clark@hcpss.org](mailto:kelly_h_clark@hcpss.org)

*We teach classroom lessons, offer small group counseling as well as short term individual sessions.*



# Mental Health – School-Based Supports

School Counselor: Kelly Clark (FT) & Tamara Braxton-Cheek (PT)

School Psychologist: Kaitlyn Stone

Pupil Personnel Worker: Lucy Hollis

Social Worker: Stephanie Reynolds

More information:

[www.hcpss.org/supports/mental-health-wellness](http://www.hcpss.org/supports/mental-health-wellness)

# Mental Health Resources

Student Support Team

[Network of Care](#)

Community-based Wrap-around Services

Foreign-Born Support Services/Bilingual Support Services

[Howard County Health Department Behavioral Health Navigation](#)

[Guide to Community Services in Howard County:](#)

<https://www.acshoco.org/resources/guide-to-community-services/>

More information:

[www.hcpss.org/supports/mental-health-wellness](http://www.hcpss.org/supports/mental-health-wellness)

# ***Field Trips & Special Events***

- **Rocky Race: November**
- **Toby's: October**
- **Robinson Nature Center: TBD**
- **Field Day: May**
- **Grade 1 Fun n Sun: June**



# ***Communication***

- **Email - please allow 24 hours for us to respond during the school week**
- **Phone call**
- **Positive notes home**
- **Canvas Inbox**
- **Need to know notes, announcements on Canvas**
  
- **Changes in transportation: Send in a note the day of OR call the front office if changes are being made after 2:00pm**
  
- **Absent notes should be sent to homeroom teacher AND the Front Office via [resabsence@hcpss.org](mailto:resabsence@hcpss.org)**



# ***Remember!!!***

- **Label coats, hats, lunch boxes, backpacks, and water bottles**
- **We have snack daily. Please send in 1 item with your child's name on it.**
- **Your child should bring a filled water bottle daily.**
- **Friday folders should be emptied and returned each Monday (or the next school day).**
- **We use A LOT of wipes, tissues, black dry erase markers!**

A vibrant summer-themed illustration. In the top right corner, a bright yellow sun with blue outlines and rays shines against a light blue sky. In the top left, a red and white striped beach umbrella is partially visible. A green palm frond extends from the top center. The background features light blue wavy lines representing water. In the bottom right, a colorful beach ball with yellow, pink, and green segments is shown with blue motion lines, suggesting it is floating or moving. A large, orange oval with a green border is centered in the image, containing the word "Questions?" in a white, bold, italicized font with a teal shadow.

***Questions?***